

## Sediment-related disasters during Typhoon No. 23 in October 2004 (Shikoku Region)

Date: October 20, 2004

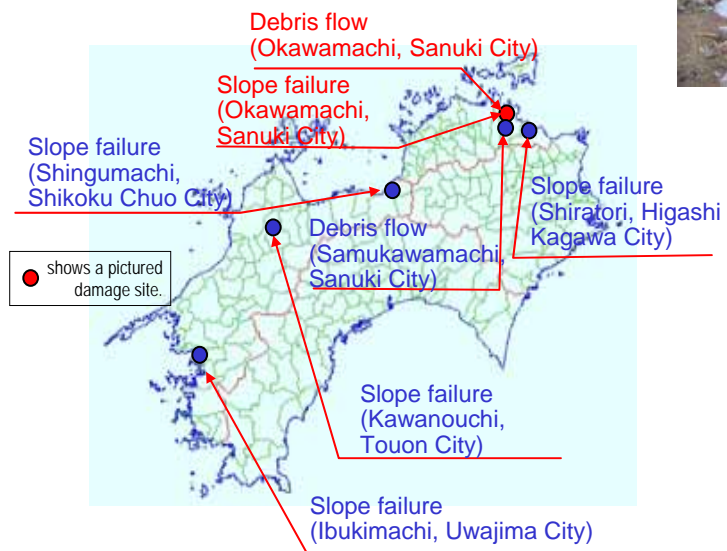
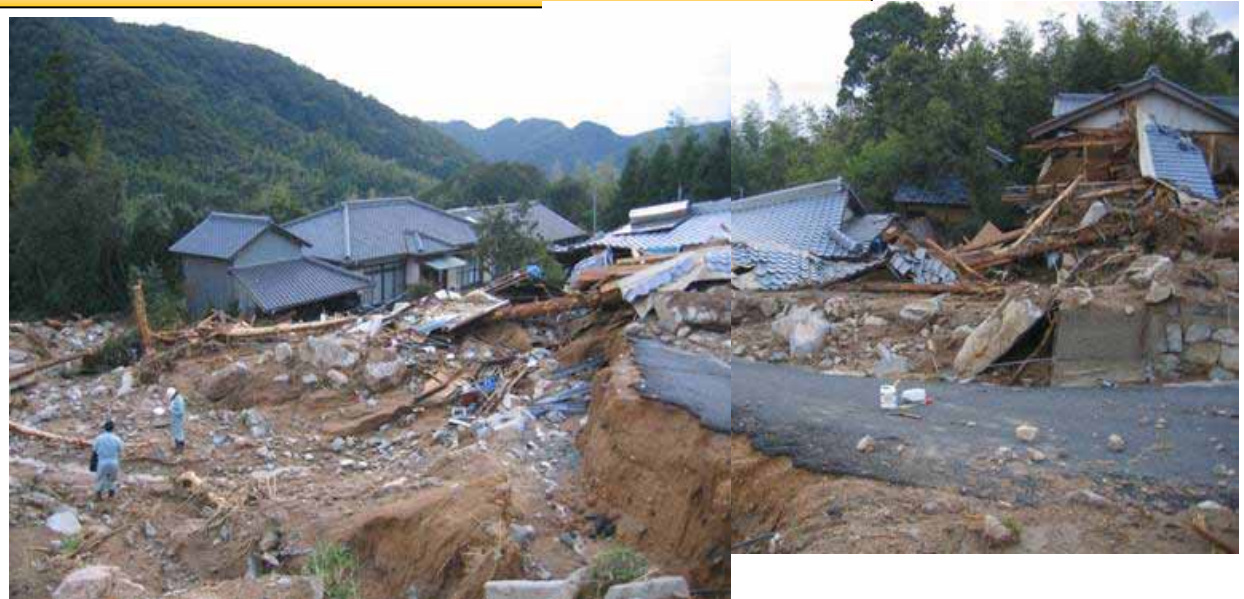
Place: Okawamachi, Sanuki City,  
Kagawa Prefecture

Meteorological conditions:

Heavy rain due to Typhoon No. 23

### Damage due to slope failure

Minamikawa, Okawamachi,  
Sanuki City, Kagawa Prefecture  
(killed: 1)



### Damage due to debris flow

Toridani River, Tazura, Okawamachi,  
Sanuki City, Kagawa Prefecture  
(Killed: 1)



Source: SABO Dept. MLIT, JAPAN